

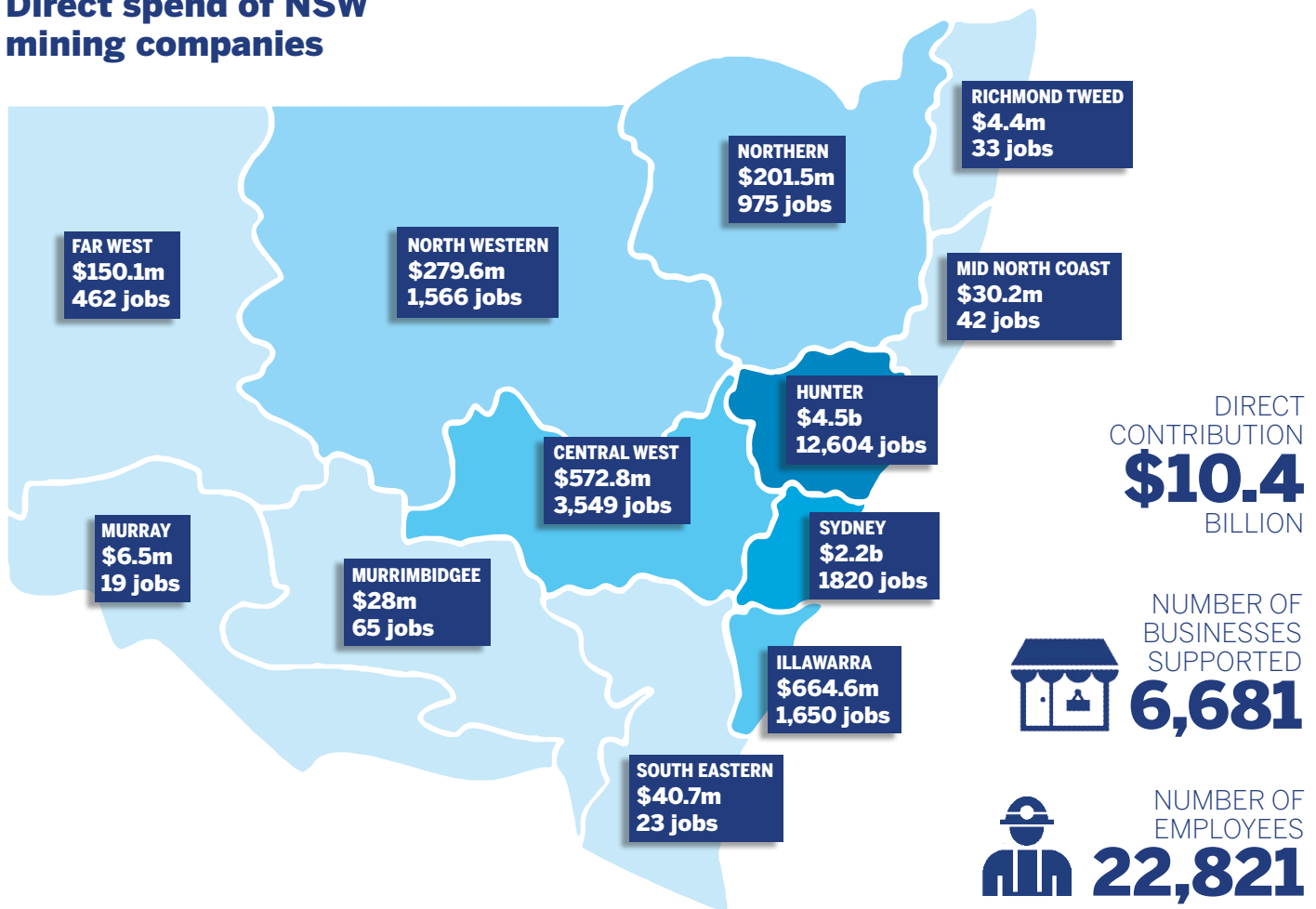
# EXPENDITURE AND JOBS SURVEY

## NSW MINING SECTOR

### 2016/2017



### Direct spend of NSW mining companies



### DIRECT CONTRIBUTION

# \$10.4

Billion

In 2016/2017, surveyed companies in NSW contributed:

- \$2.9 billion in wages and salaries to 22,821 direct full-time employees (including contractors);
- \$5.9 billion in community contributions and purchases of goods and services from 6,681 local businesses (includes contractors).

### INDIRECT CONTRIBUTION

# \$21.9

Billion

This 10.4 billion in direct spending:

- Generated \$21.9 billion in additional goods and services purchases as:
  - Businesses in the supply chain responded accordingly with additional purchases of \$15 billion;
  - Workers along the supply chain spent \$6.9 billion in wages;
- Supported 107,346 indirect jobs in NSW.

### TOTAL CONTRIBUTION

# \$22.8

Billion

The total economic contribution (direct and indirect) from surveyed companies in 2016/17 amounted to:

- \$25.4 billion in output/turnover;
- \$22.8 billion in value added, or 4.0% of total GRP in NSW (\$575 billion)
- 130,167 full-time equivalent jobs created and supported, or 3.4% of the entire workforce in NSW.