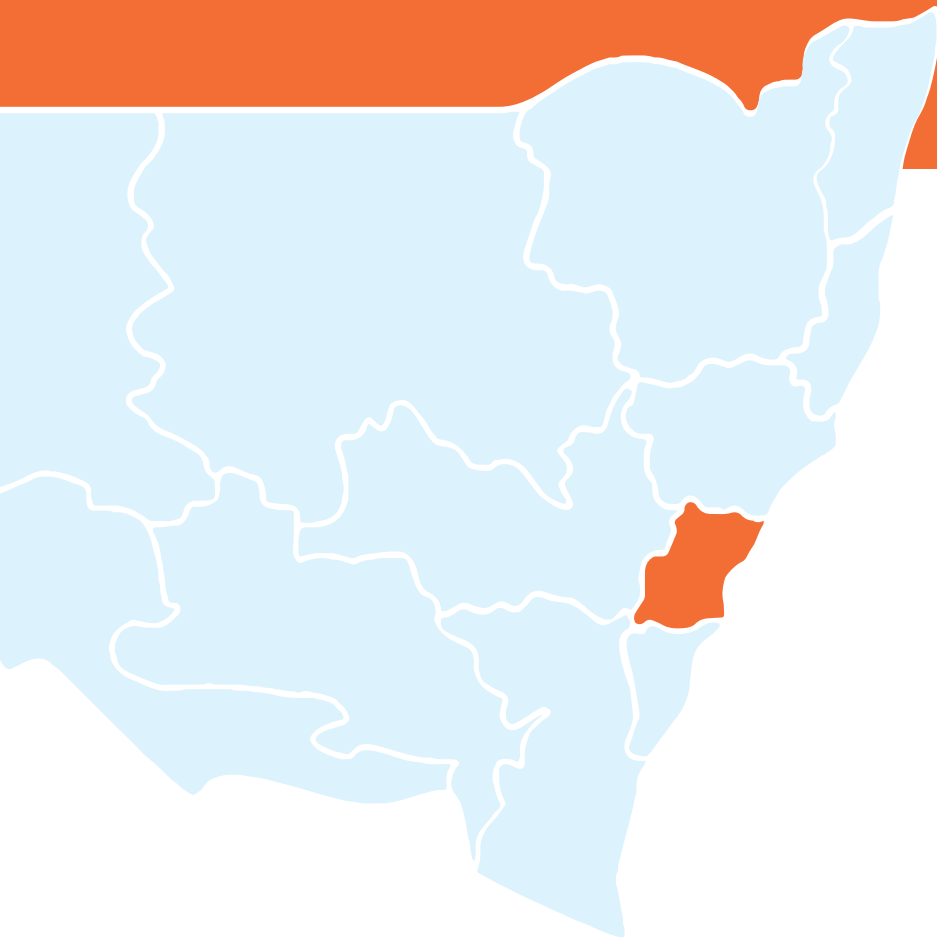


EXPENDITURE AND JOBS SURVEY

NSW MINING SECTOR / REGIONAL
2016/2017



SYDNEY



Total direct spending

\$2.2
billion



1,820
direct full-time
employees



2,349
local businesses
supported

DIRECT CONTRIBUTION

In this region during 2016/17, the companies surveyed contributed \$2.2 billion in direct spending through:

- \$199 million in wages and salaries to 1,820 direct full-time employees (including contractors);
- \$2.0 billion in purchases of goods and services from 2,349 local businesses (includes contractors);
- \$0.6 million in contributions to 95 community organisations.

INDIRECT CONTRIBUTION

This \$2.2 billion in direct spending generated:

- \$3.3 billion in additional supply chain goods and services purchases; and
- \$1.2 billion in wages and salaries associated with 14,895 additional jobs supported in this region.

TOTAL CONTRIBUTION

The total economic contribution in this region (direct, indirect and induced) during 2016/17 from the companies surveyed amounted to:

- \$5.3 billion in supplying business purchases;
- \$1.4 billion in total wages and salaries paid to workers;
- \$4.7 billion in value added, or 1.1% of total GRP in this region
- 16,715 full-time equivalent jobs, or 0.7% of the entire workforce in this region.

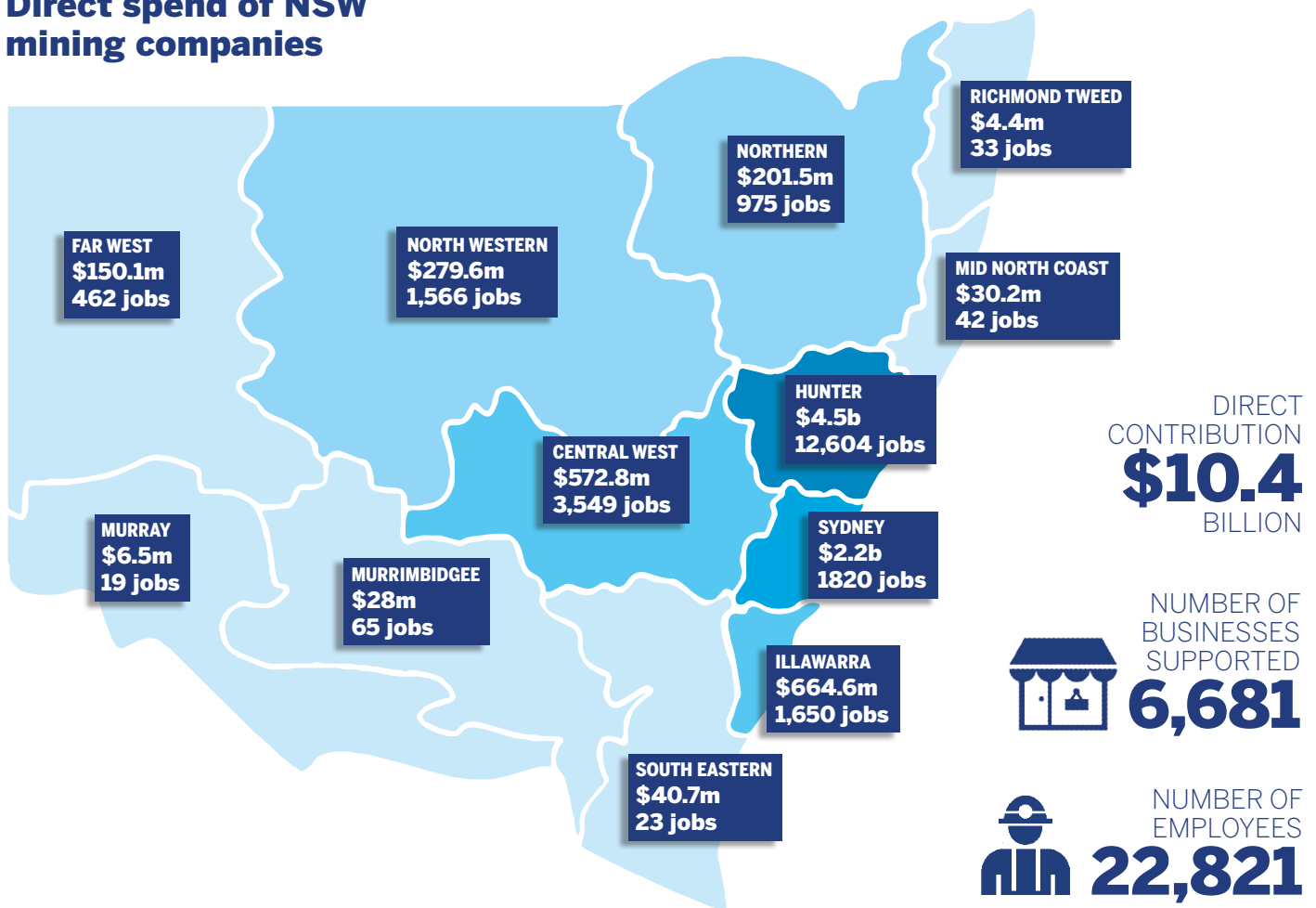
EXPENDITURE AND JOBS SURVEY

NSW MINING SECTOR

2016/2017



Direct spend of NSW mining companies



DIRECT CONTRIBUTION

\$10.4

Billion

In 2016/2017, surveyed companies in NSW contributed:

- \$2.9 billion in wages and salaries to 22,821 direct full-time employees (including contractors);
- \$5.9 billion in community contributions and purchases of goods and services from 6,681 local businesses (includes contractors).

INDIRECT CONTRIBUTION

\$21.9

Billion

This 10.4 billion in direct spending:

- Generated \$21.9 billion in additional goods and services purchases as:
 - Businesses in the supply chain responded accordingly with additional purchases of \$15 billion;
 - Workers along the supply chain spent \$6.9 billion in wages;
- Supported 107,346 indirect jobs in NSW.

TOTAL CONTRIBUTION

\$22.8

Billion

The total economic contribution (direct and indirect) from surveyed companies in 2016/17 amounted to:

- \$25.4 billion in output/turnover;
- \$22.8 billion in value added, or 4.0% of total GRP in NSW (\$575 billion)
- 130,167 full-time equivalent jobs created and supported, or 3.4% of the entire workforce in NSW.