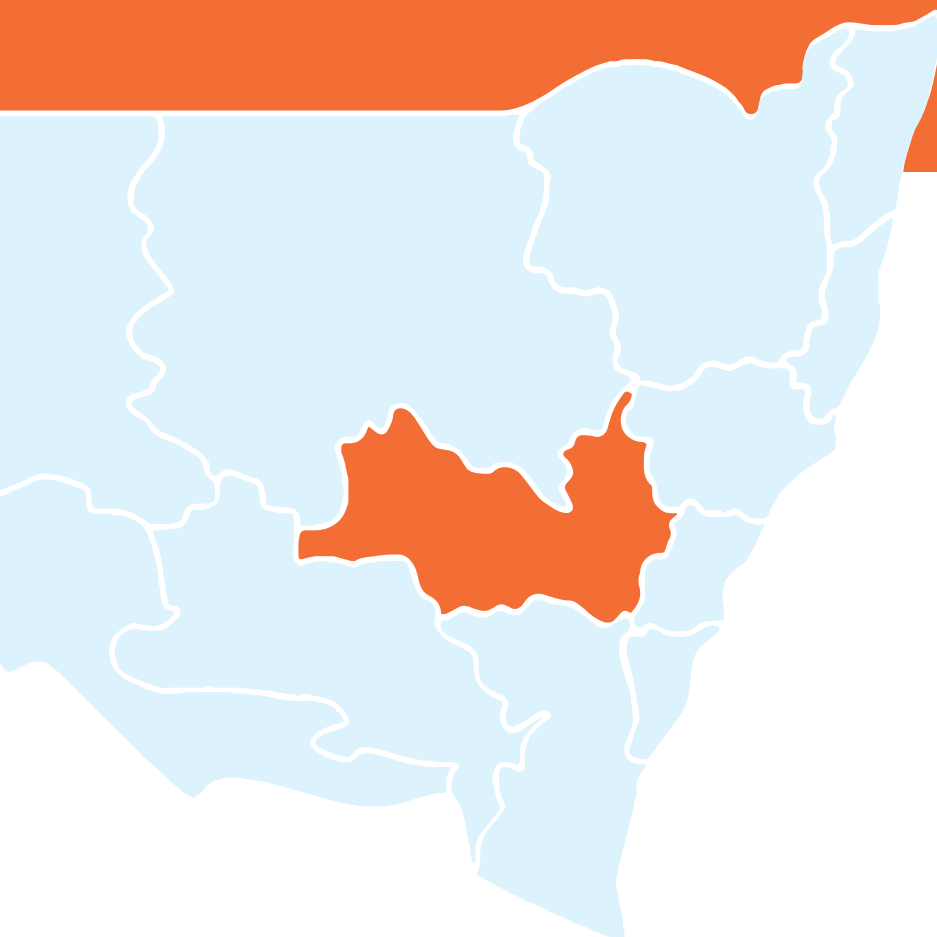


EXPENDITURE AND JOBS SURVEY

NSW MINING SECTOR / REGIONAL
2016/2017



CENTRAL WEST



Total direct spending
\$572.8
million



3,549
direct full-time
employees



873
local businesses
supported

DIRECT CONTRIBUTION

In this region during 2016/17, the companies surveyed contributed \$572.8 million in direct spending through:

- \$393 million in wages and salaries to 3,549 direct full-time employees (including contractors);
- \$169 million in purchases of goods and services from 872 local businesses (includes contractors);
- \$1.7 million in contributions to 252 community organisations.

INDIRECT CONTRIBUTION

This \$572.8 million in direct spending generated:

- \$710 million in additional supply chain goods and services purchases; and
- \$323 million in wages and salaries associated with 8,552 additional jobs supported in this region.

TOTAL CONTRIBUTION

The total economic contribution in this region (direct, indirect and induced) during 2016/17 from the companies surveyed amounted to:

- \$880 million in supplying business purchases;
- \$717 million in total wages and salaries paid to workers;
- \$1.3 billion in value added, or 8.5% of total GRP in this region
- 12,101 full-time equivalent jobs, or 12.3% of the entire workforce in this region.

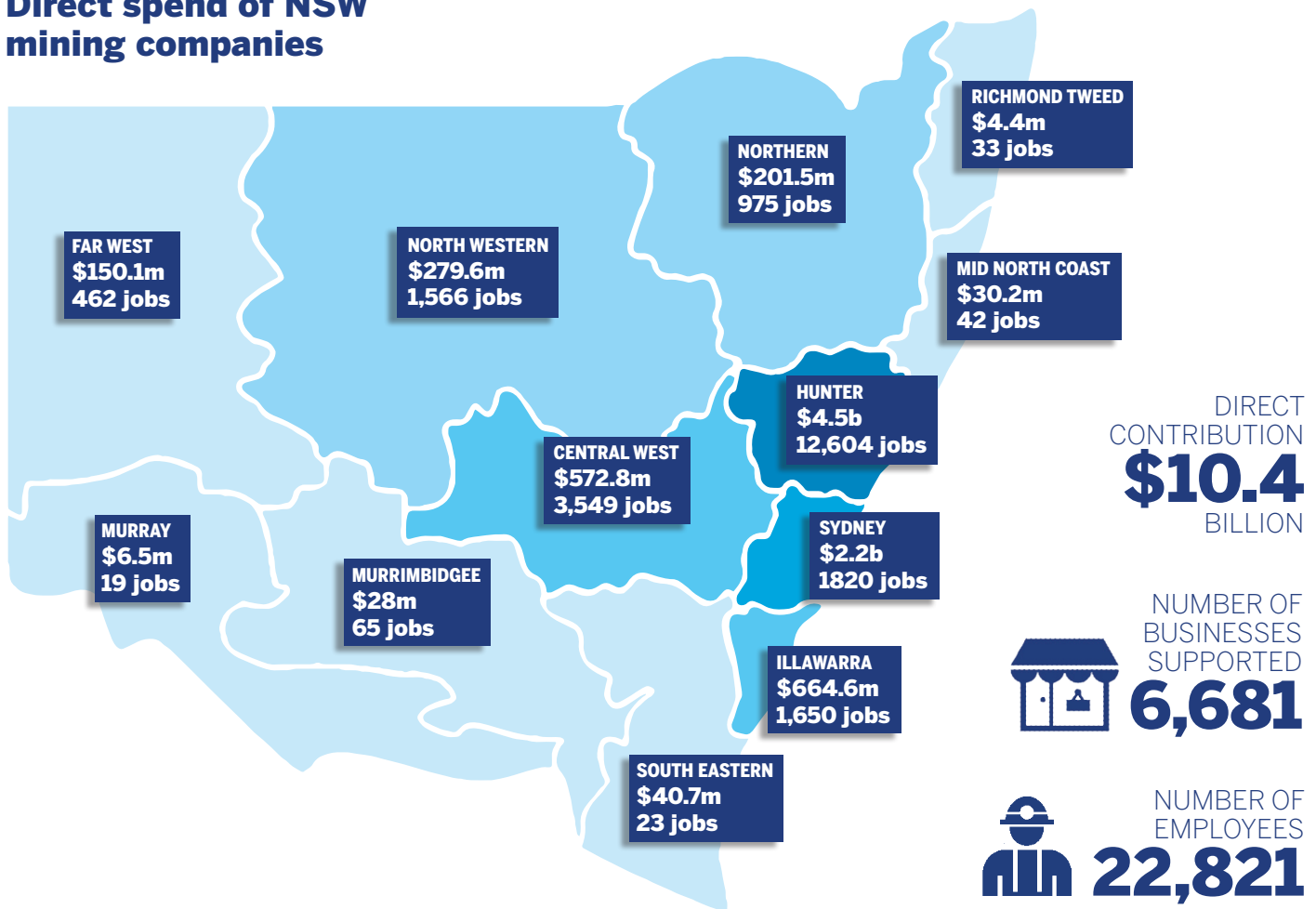
EXPENDITURE AND JOBS SURVEY

NSW MINING SECTOR

2016/2017



Direct spend of NSW mining companies



DIRECT CONTRIBUTION

\$10.4 Billion

In 2016/2017, surveyed companies in NSW contributed:

- \$2.9 billion in wages and salaries to 22,821 direct full-time employees (including contractors);
- \$5.9 billion in community contributions and purchases of goods and services from 6,681 local businesses (includes contractors).

INDIRECT CONTRIBUTION

\$21.9 Billion

This 10.4 billion in direct spending:

- Generated \$21.9 billion in additional goods and services purchases as:
 - Businesses in the supply chain responded accordingly with additional purchases of \$15 billion;
 - Workers along the supply chain spent \$6.9 billion in wages;
- Supported 107,346 indirect jobs in NSW.

TOTAL CONTRIBUTION

\$22.8 Billion

The total economic contribution (direct and indirect) from surveyed companies in 2016/17 amounted to:

- \$25.4 billion in output/turnover;
- \$22.8 billion in value added, or 4.0% of total GRP in NSW (\$575 billion)
- 130,167 full-time equivalent jobs created and supported, or 3.4% of the entire workforce in NSW.